

Sponsorship Opportunities & Benefits

Platinum
\$5,000



- Introduction from podium and 2-minute speaking opportunity
 - Exclusive signage at event venue
 - *Clickable logo on Samaritan's website for 365 days & inclusion in digital marketing*
 - 6 Dinners*
 - 6 Bar tickets
 - Full page color ad in event program
 - VIP banquet seating
 - Acknowledgement at closing
- ... PLUS, **Naming Rights** to this year's event and all 3 *À La Carte* Benefits.

Gold
\$3,000



- Introduction from podium
 - Prominent signage at event venue
 - *Clickable logo on Samaritan's website for 365 days*
 - 4 Dinners*
 - 4 Bar tickets
 - Full page color ad in event program
- ... PLUS, choose 2 *À La Carte* Benefits.

Silver
\$1,000



- Silver Tier Includes Business and Table Sponsors*
- Introduction from podium
 - Signage at event venue
 - *Clickable logo on Samaritan's website for 180 days*
 - 2 Dinners*
 - 2 Bar tickets
 - Half page color ad in event program
- ... PLUS, design your *À La Carte* sponsor display station.

Bronze
\$500



- Introduction from podium
- 1/4 Page ad in event program
- *Clickable logo on Samaritan's website for 90 days*
- 1 Dinner*
- 1 Bar ticket

Friendship
\$250



- Introduction from podium
- Logo in event program
- *Clickable logo on Samaritan's website for 60 days*
- 1 Bar ticket

À La Carte Sponsor Benefits

- 1 We'll provide you with a **Sponsor Impact Landing Page** on our website and/or engage in a co-branded activity or content. You and our director will meet to explore, plan, and execute your idea.
- 2 We'll bring a **workshop** to your site to present a topic of your choice, such as navigating change, managing stress, emotional intelligence, etc., presented by a Samaritan coach or therapist.
- 3 We'll give you a **display station** at our gala that guests may visit throughout the evening. You can offer an activity and/or display your literature, products, signage, and giveaways. Wifi available.

*NOTE: For additional meals, add \$125 ea.

Proceeds benefit:



SAMARITAN
Counseling
Guidance Consulting

Scan to
learn
about
our gala.



samaritanspiritgala.net

SAMARITAN SPIRIT *Gala*

When

Thurs., October 8, 2026
6-7pm: Cocktail Hour
Live Music, Diversions
7-8:15pm: Gourmet Dinner
8:15-9pm: Program

Where

LeMont Restaurant
1114 Grandview Avenue
Pittsburgh, PA 15211

Keynote Speaker

Bonnie Artman-Fox
Workplace Conflict Expert
Accredited Boss Whisperer

Purpose

To raise funds and
awareness for mental health
counseling at Samaritan

samaritanspiritgala.net



Proceeds benefit:



Samaritan Corporate Sponsors: Get Up to 365-Day Exposure on Our Well-Performing Website

Samaritan Counseling, Guidance, Consulting serves 1,400 people annually who seek healing and empowerment for their mental, emotional, and relational health. Our heartfelt mission is to help them achieve life-transforming growth through holistic psychotherapy. But we can't do it alone.

We need and deeply value the support of the business community. You help us maintain our operations in four Western PA counties and serve those who lack the resources to pay. **To show our gratitude, we've greatly enhanced our gala sponsorship benefits. We will recognize your support as an organizational sponsor, not just a gala sponsor. For your sponsorship, we'll display your clickable logo on our official website, www.samaritancounseling.net, for up to 365 days—not just short-term on our gala website.**



What Does this Mean for You?

Your clickable logo will appear on every page of Samaritan's website.

- Our website had over 24,000 page views in 2025; 20,000 is considered a solid, impressive number for comparable mental health practices in Pennsylvania.
- 15% of our visitors are "return visitors," which is higher than most mental health centers in the U.S. Plus, half of our visitors find us through organic searches.

You'll be recognized as an advocate for mental health, which is a globally acclaimed component of overall health and human rights. You'll also be associated with a leading, trusted nonprofit that has served Western PA for 44 years. And we're still growing.

- With a deep passion to meet the rising demand for mental healthcare, Samaritan has increased the number of therapy sessions it provides by 73% since 2019.
- As a nonprofit organization, Samaritan earns a 100% 4-star rating by Charity Navigator, the leading charity evaluator in the United States.
- Samaritan is nationally accredited by the Solihnten Institute, affirming that we use the best available clinical practices in the mental health field and maintain efficient administration and organizational structures.

You'll still receive all other benefits associated with your gala sponsorship such as complimentary dinners and bar tickets (according to your giving tier), plus our new *À La Carte Benefits*. Please review the enclosures for all details and contact **Beth Healey** at bhealey@samaritancounseling.net if you have any questions. **Thank you!**

Nationally accredited by



Main Office: 202 Beaver St., 3rd Fl., Sewickley, PA 15143
888-200-9746 | www.samaritancounseling.net

Why Sponsor Samaritan Counseling?

ABOUT US

Since 1982, Samaritan Counseling, Guidance, and Consulting has met the growing demand for professional counseling in Western Pennsylvania. Our person-centered approach offers compassionate, spiritually-integrated care to all who seek help, without discriminating on any basis, including ability to pay. We apply the best available clinical practices in the mental health field to help people heal and thrive.

Impact of Your Support

Mental healthcare is in dire shortage in Pennsylvania. Your support will help us keep our doors open to so many people who are desperate for care, and offer treatment to our most vulnerable clients—those experiencing financial hardship. Your sponsorship gift of:

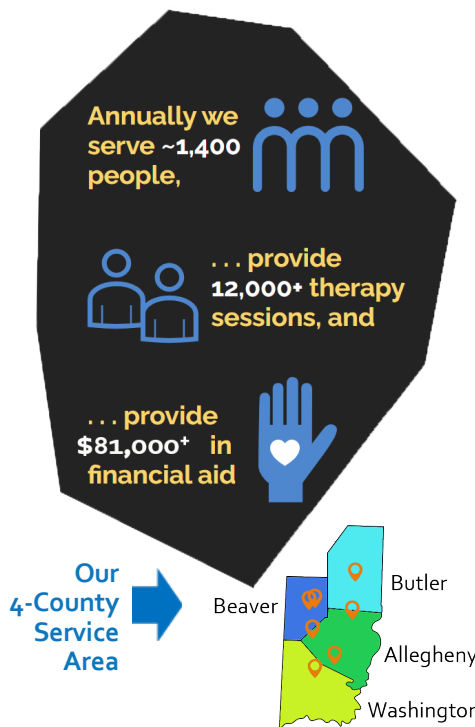
\$5,000 provides life-transforming care for 5 people.

\$3,000 provides life-transforming care for 3 people.

\$1,000 provides life-transforming care for 1 person.

\$500 alleviates a person's symptoms.

\$250 helps a person gain stability.



Gala Guest Demographics

- Affluent; professionals; retirees
- Ages 35-65+
- Business executives, entrepreneurs
- Education: Advanced degrees
- Community and family oriented

Client Demographics

Most of our clients find us by visiting our website. So, who are our visitors? Essentially, people from all backgrounds and walks of life. Based on our clientele, over half are women. The majority are employed, under age 65, married, and have children. Male clients share these demographics.

Our clients reside in numerous Western Pennsylvania communities. Most earn a good living from widely varying occupations, while ~20% qualify for fee subsidies through our Samaritan Cares fund.

People seek care with us to heal from the effects of trauma and/or learn to effectively manage their thoughts, emotions, and behaviors in healthy ways. They are courageous, determined, and willing to work hard to achieve personal growth, improve their marriages and the lives and health of their children. They appreciate being able to freely speak about their faith and have their beliefs integrated into their care.



Complete/mail the enclosed form with your check OR simply scan the QR code to fulfill your sponsorship.

What Our Clients Have Shared



"I didn't know what to do. I felt I was at a point where nothing could be done. But at Samaritan, I found peace, comfort, and acceptance. Everyone has issues, but my issue no longer defines who I am. I gained control of my life. The disorder and anxiety weren't controlling me anymore. I want to thank the people who contribute to this organization. Samaritan helps us get our lives back together when we're at our lowest point." - Mindy (pictured w/permission)

Before coming to Samaritan, I went to two other centers. I was hesitant to try again, but I needed help. I value the life-changing help I received at Samaritan. The world is getting more complicated to sort through every day. I am now at peace with who I am, and I know I've done everything I can do to heal. Samaritan cannot exist without people willing to support it financially. I was blessed to be able to pay for my counseling, but many cannot. - Bill



For more testimonials, visit samaritancounseling.net.

Complete and mail with your check to Samaritan Counseling, Guidance, Consulting, 202 Beaver St., 3rd Fl., Sewickley, PA 15143.

Samaritan Spirit Gala Sponsorship Fulfillment & RSVP

THANK YOU!

Please select your sponsorship tier: Platinum \$5,000 Gold \$3,000 Silver \$1,000 Bronze \$500 Friendship \$250

The official registration and financial information of Samaritan Counseling Center of Western PA may be obtained from the Pennsylvania Department of State by calling toll free, within Pennsylvania, 1-800-732-0999. Registration does not imply endorsement. We are a 501(c)3 nonprofit, EIN 25-1425598. Your gift is tax-deductible to the full extent of the law and you will receive a receipt for your records.

Business Name

Your Name

Business Address

Your Phone

City

State

Zip

Your Email

Amount payable to Samaritan Counseling: \$

Check if you will attend the gala. Number in party:

Number of complimentary admissions per sponsorship tier:

Platinum: 6 Gold: 4 Silver: 2 Bronze: 1 If you wish to invite additional guests, please add \$125 per guest to your total.

Meal Choices: Please indicate number of each.

#Chicken

#Salmon

#Beef (NO VEAL)

#Other (Describe meal

requirement below.)

Proceeds benefit Samaritan Counseling, Guidance, Consulting



Questions? Ideas?

Please contact Beth Healey, Samaritan's Director of Development and Marketing, at bhealey@samaritancounseling.net or (724) 987-2810.